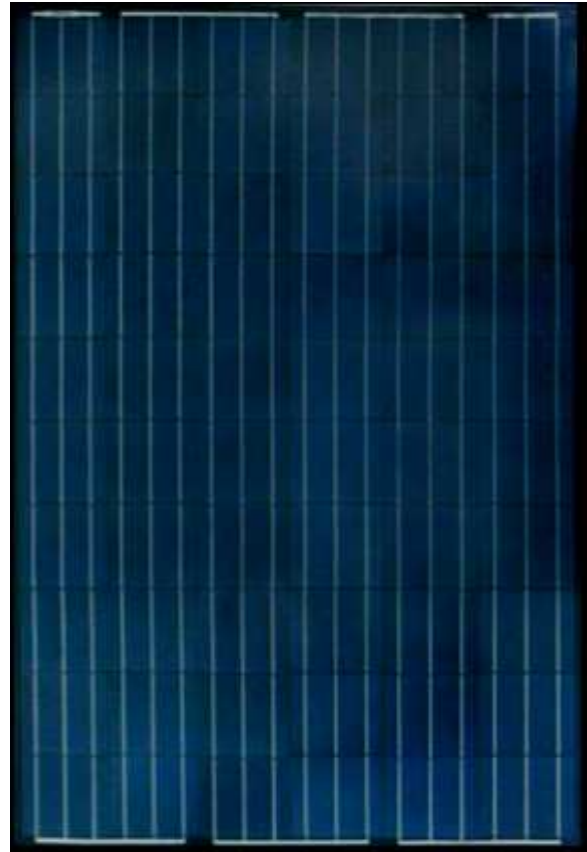


DXPVM235P6-30-B/B PV Module

235W High Performance Polycrystalline Black Solar PV Module

FEATURES

- High module conversion efficiency up to 14.45%
- Guaranteed output tolerance within -0%/+3% ensures high reliability
- 6 Bypass diodes minimise shading output losses
- Tough anodised black aluminium frame with drainage holes
- Tested according IEC 61215 for snow loads up to 5400 Pa (ca .550Kg/m²)
- Anti reflective, hydrophobic self cleaning glass increases optical performance
- Produces above average yields thanks to its polycrystalline 3-busbar and NES technology.
- Meets very high aesthetic and performance standards. Thanks to the black frame and black back sheet the module matches any rooftop and is suitable for:
 - Residential roof top systems
 - On-grid commercial systems
 - Off-grid commercial systems
 - Off-grid utility systems



WARRANTY

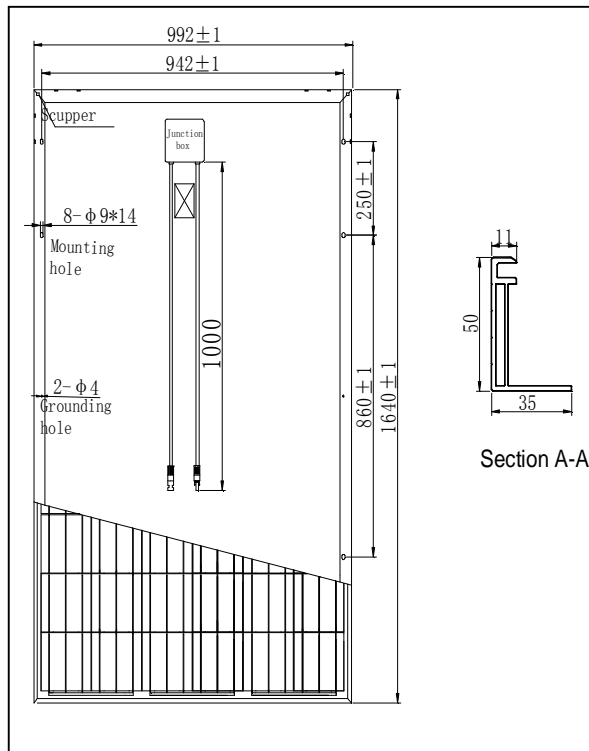
- **12 year product warranty**
- **25 year linear power output warranty**

CERTIFICATION

- IEC61215 PV module design qualification and type approval
- IEC61730 PV module safety qualification
- IEC61701 Salt mist corrosion testing of PV modules
- IEC62716 Ammonia corrosion testing of PV modules
- CE conformity
- PV Cycle
- ISO9001:2008 & ISO14001:2004

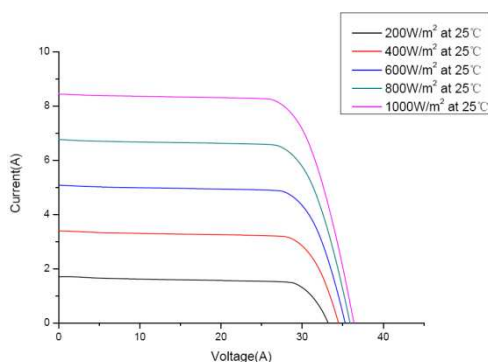
DXPVM235P6-30-B/B PV Module

Specifications



Characteristic Curves

Current-Voltage & Power-Voltage Characteristics



Electrical Characteristics

Standard Test Conditions (STC):	DXPVM235P6-30-B/B
Maximum power at STC (p _{max})	235Wp
Output tolerance	-0% / +3%
Guaranteed minimum power	235Wp
Maximum power operating voltage (V _{mp})	29.34V
Maximum power operating current (I _{mp})	8.01A
Open circuit voltage (V _{oc})	37.00V
Short circuit current (I _{sc})	8.48A
Module efficiency (η _m)	14.45%
Cell efficiency	16.14%

Irradiance 1000W/m², module temperature 25°C, spectrum air mass = 1.5

Normal Operating Cell Temperature (NOCT):	DXPVM235P6-30-B/B
NOCT	45°C +/-2°C
Maximum power (P _{max})	168.12Wp
Maximum power operating voltage (V _{pm})	29.34V
Maximum power operating current (I _{pm})	5.73A
Open circuit voltage (V _{oc})	36.00V
Short circuit current (I _{sc})	6.43A
Temperature co-efficient – open circuit voltage (αV _{oc})	-0.32%/°C
Temperature co-efficient – short circuit current (αI _{sc})	0.05 %/°C
Temperature co-efficient – peak power (αP _{max})	-0.43%/°C

Irradiance 800W/m², ambient temperature 20°C, wind speed 1m/s

Mechanical Characteristics

Solar cell	Polycrystalline 156 x 156mm
No of cells	60 (6x10) in series
Dimensions	1640mm x 992mm x 50mm (1.64m ²)
Weight	19.6kg
Front glass	3.2mm tempered glass
Frame	Black Anodized aluminium alloy
Junction box	IP65 rated
Connection type	2x 1000mm x 4mm ² cable with MC4 inter-connectors

Limits

Operating temperature	-40°C to +85°C
Maximum system voltage	1000V DC
Maximum mechanical load	5400Pa
Over current protection	15A